

OPEN DAILY 10 a.m. to 1^o p.m.

NORTH OF ENGLAND MOTOR SHOW

CITY HALL

PLEASURE CARS COMMERCIAL VEHICLES

JANUARY 9th-17th JANUARY 30th-FEB 7th

MANCHESTER

ADMISSION ONE SHILLING.

INVINCIBLE TALBOT

WE INVITE YOUR INSPECTION OF OUR TWO REPRESENTATIVE 1914 MODELS ON VIEW AT

STAND NO. 40,
MANCHESTER MOTOR SHOW.

12 H.P. TALBOT, with 4-seater Touring Body, Hood, Screen, and full equipment... £410

20-30 H.P. TALBOT, with handsome Limousine Landulette Body, and full equipment... £725

12 h.p., 15-20 h.p., 20-30 h.p., 20-40 h.p. and 25-50 h.p. Models. Catalogue on request.

CLEMENT TALBOT, LTD., Barby Road, North Kensington, LONDON, W.

See Stand No. 21,
and you have seen the finest propositions in the Show.

Arrol-Johnston, Ltd.,
DUMFRIES.

Local Agents: J. S. CORDINGLEY, Haslingden.

ARMSTRONG WHITWORTH

MANCHESTER MOTOR EXHIBITION, January 9-17.

STAND 22.

15/20 H.P. CHASSIS... £375.
17/25 H.P. CHASSIS... £435.
20/30 H.P. CHASSIS... £500.
30/50 H.P. CHASSIS... £850.

SIR W. G. ARMSTRONG, WHITWORTH & CO.,
ELSWICK WORKS, NEWCASTLE-ON-TYNE.
LONDON: 3, BLENHEIM STREET, BOND STREET,
MANCHESTER: 114, DEANS GATE.
LOCAL AGENTS: BLACKBURN GARAGE AND AUTOCAR CO., Blackburn.

CLANCHER 7/6

POPULAR COVER 28x13

WIRED OR BEADED OBTAINABLE AT ALL AGENTS

TWICE IN FIVE YEARS
THE
CADILLAC CAR
has been awarded by the R.A.C.
THE DEWAR TROPHY
(The "Blue Ribbon" of Motordom).

Among other Cars which have achieved this distinction ONCE being Rolls-Royce, Daimler, and Napier.

F. S. BENNETT, Ltd., 219, Shaftesbury Avenue, London, W.C.

A SUGGESTION
for to-day. Go to the Manchester Motor Show at City Hall, and critically examine the

SUPREME SUNBEAM

See the handsome 25/30 h.p., 6-cyl., with Double Cabriolet Body, the 12/16 h.p. 4-cyl. with Standard Torpedo Body—and place an order.

NOTE: The Stand Number is 39.
Mr. F. C. HUNT, Manager of our Manchester Depot, will be in attendance, and pleased to give full details.

THE SUNBEAM MOTOR CAR CO. LTD.,
112, DEANS GATE, MANCHESTER.

Works: Wolverhampton.

MERIGOLD BROS.,
Will be pleased if you will inspect their exhibit of
Humber Models
ON STAND 47.

Trial Runs arranged—Mr. A. E. Merigold,
Stand 47, or
147-148, Church St., PRESTON.
TELEPHONE 16.

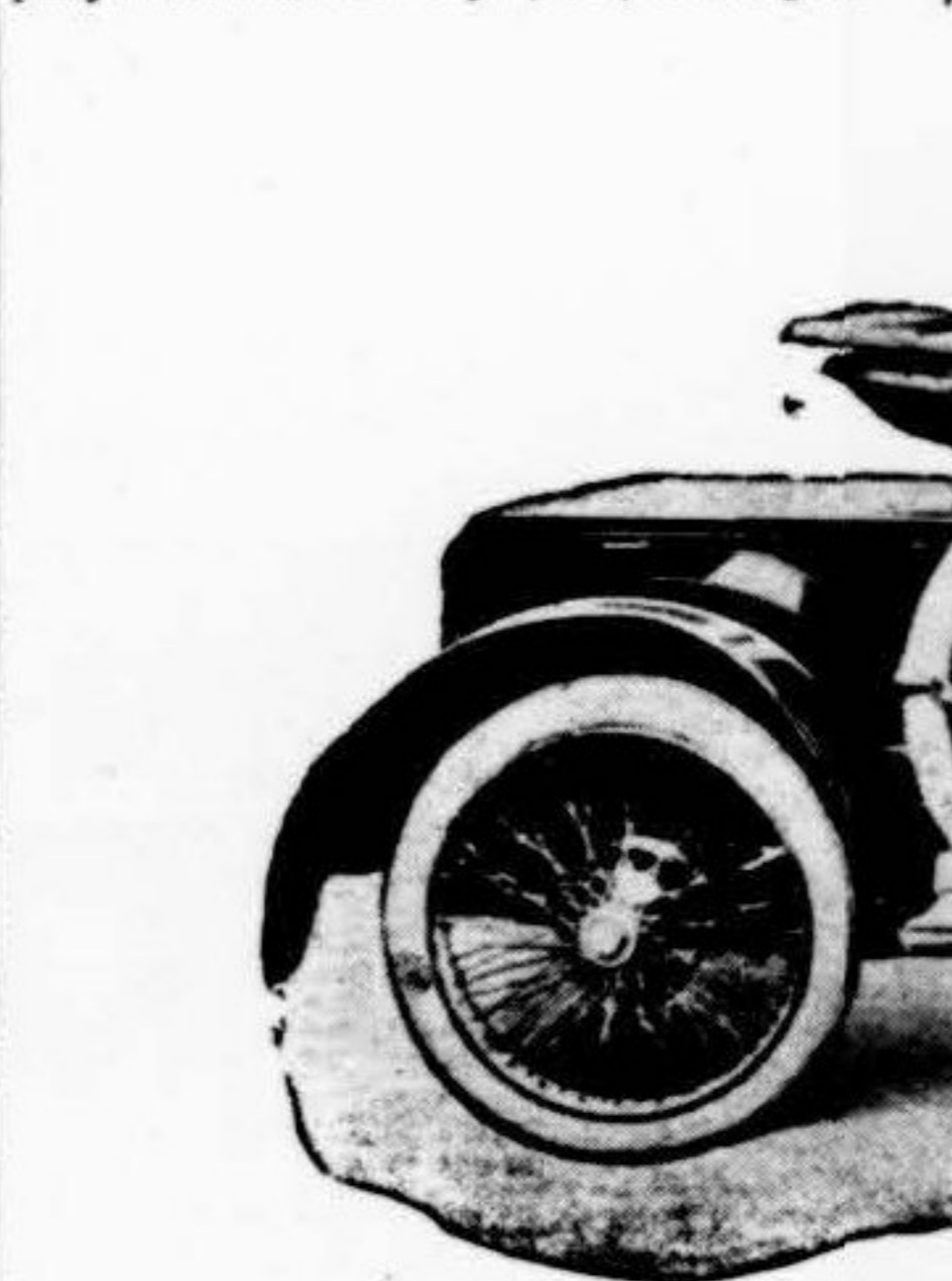
North of England Motor Exhibition.
[CONTINUED.]

when properly explained. There are many competent motor engineers who can produce a good chassis if you do not limit them to price, but the faculty of designing one of high grade with a view to economy of production is very rare. Herein lies the secret of Mr. Owen Clegg's success. Not only is he a designer of highest ability, but he is at the same time a great organizer and keen business man. He has fully grasped the advantage of concentrating on one type of chassis which meets the popular demand, and by designing it with a view to economical production and by means of thorough work organization he has attained his object in producing a car at the lowest possible cost consistent with the highest standard of quality. And as regards body work, the Darracq Company have tackled the problem in a very thorough manner, having created



MR. H. W. CRANHAM.
an up-to-date coach-building works at Fulham, where they produce bodies of smart design, worthy of the chassis turned out from the Sunbeams works.
The complete 16 h.p. car (17.5 R.A.C. with five-seater torpedo body and full equipment, including one-man hood, screen, C.A.V. dynamo lighting set with five lamps, five steel-studded cover, horn, pump, jack, and tool outfit, is listed at £375.
For Lancashire, Cheshire, Westmorland, Cumberland, Shropshire and North Wales the agency has been secured by R. H. Carlisle and Co., Ltd., Manchester.

SUNBEAM.—Stand 39.
By reason of compulsory curtailment of space the Sunbeam Motor Co. are permitted to show on Stand No. 39 only a couple of cars—a 25-30 six-cylinder, with double cabriolet body and a 12-16 four-cylinder, with standard touring body. Other models, it may be mentioned, can be inspected at the Company's Manchester depot, 112, Deansgate.



Although small, the Sunbeam Stand will prove attractive. The marvellous feat on road and track, at home and abroad, cannot be overlooked; even those who do not care an oil can for the sport, or who are new to motoring, will admit that the car that holds speed records from one to twelve hours and world's records from 100 to 1,000 miles is one that demands attention.
Visitors will be particularly interested in the smaller-powered touring car, which is fitted with an adjustable driving seat. The mechanism of this new fitment is extremely simple. All that requires to be done, and it takes little time to do it, is to depress a small lever placed in front of the driving seat. This movement operates a patent ratchet, and enables the seat to be moved to the position desired by the driver, backwards or forwards to suit his or her convenience. The adjustable seat is a distinct improvement in touch with a local agent, from whom all necessary supplies, spare parts, etc., can be obtained at a moment's notice. Mr. J. S. Cordingley, of Haslingden, is local agent for Arrol-Johnston cars.



MR. JERRY BELDER, OF LOOKERS.
ment that will be appreciated by both sexes. Many other excellent ideas are embodied in Sunbeam cars, which year after year show progress in every direction.

STANDARD CARS.—Stand 35.
The All-British Standard cars are being exhibited at Stand No. 35 by the Hollingdale Automobile Co., Ltd., who are representatives of the makers for Lancashire and Cheshire. Two examples are shown of the very popular Standard light car—9.5 h.p. rating—which has established a firm position as a car of highest quality, small in size, cool and in running expenses. The chief points in its construction may be briefly summarized: A four-cylinder engine of unusual silence and smoothness, single-plate clutch with very light driving plate, giving very sweet engagement and making gear changing extremely easy, three-speed gear box with gate change, a very substantial back axle with overhead worm, H section front axle of stamped steel, pressed steel frame, long and easy springs, and carefully-designed coachwork. One of the models shown is an exceptionally handsome coupe with "Rapelagh" type body. It has a cabriolet type of head, which, when opened out, falls very low with little overhang. Frameless windows are fitted to the doors, and the whole finish in dark blue gives the appearance of richness and stability. The other model shown has the usual "Rhyll" open two-seater type of body, and complete with hood, screen, lamps, Sankey detachable wheels, etc., sells at £185.

BAYARD.—Stand 69.

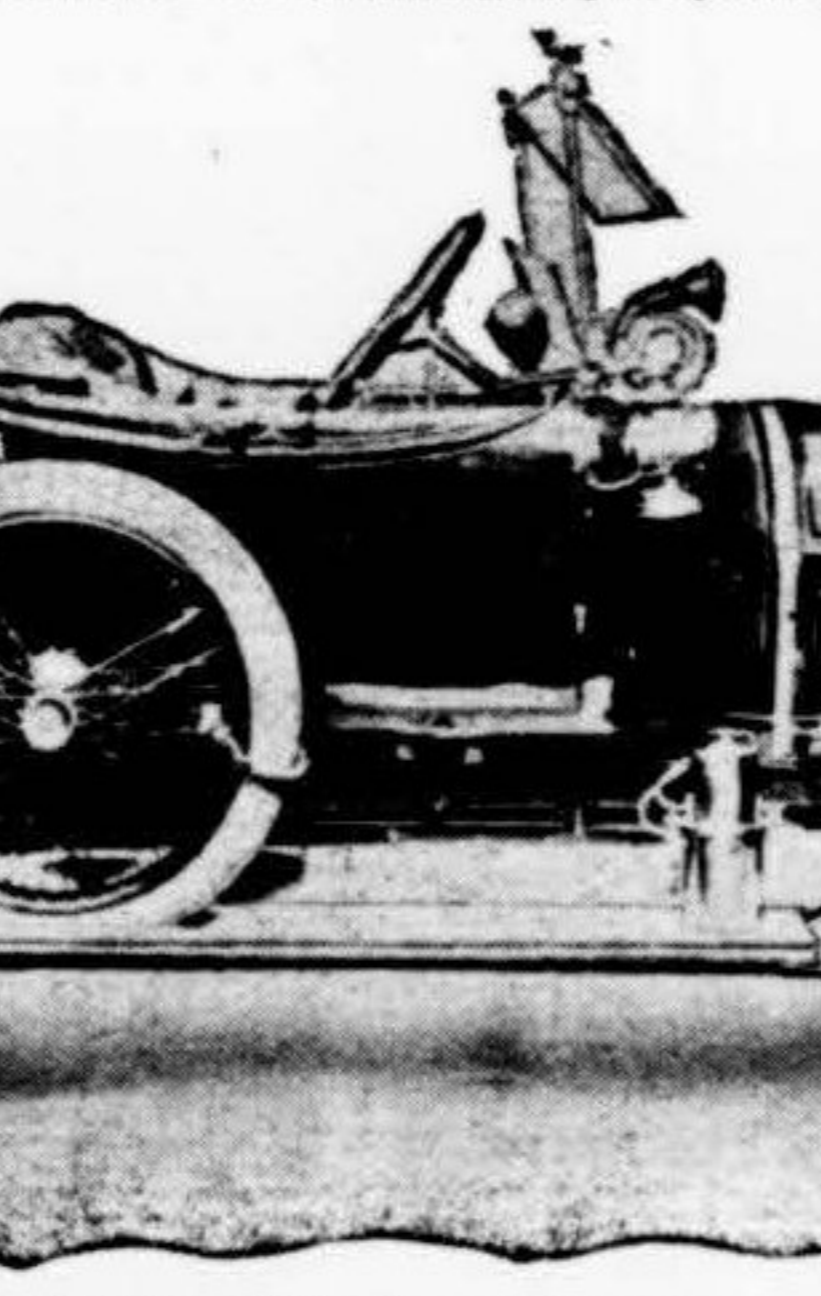
Stand No. 69 will be of special interest to those visitors who may still cling to the old-fashioned idea that motoring is an expensive indulgence. Perhaps no car has been devised to enlighten people to the economical side of motoring as has the Bayard, of which two representative models are here displayed, an 8 h.p. with three-seater touring body, and a 14 h.p. landulette. Both are good specimens of high-grade motor engineering allied to creditable and comfortable coachwork, at an extremely moderate price withal. Nor is this advantage confined to the initial outlay only, for hundreds of Bayard motorists testify to the remarkably low upkeep cost of their cars. 35 to 40 miles per gallon, it is claimed, is a common average for the 8 h.p. car. Both models on view are four-cylinder cars with enclosed valves, pump lubrication, and bevel drive, the 14 h.p. having both hand and foot brakes on rear wheels. The 8 h.p. car, with 60 x 120 mm. engine, with hood, screen, 750 x 85 tyres, and full road equipment, is listed at £245; the 14 h.p. exhibit, with 1 landulette body, dynamo electric lighting set, self-starter, and full road equipment is priced at £355. Other models are on view at the showrooms of Frances Motors, Ltd., at St. Mary's-street, Deansgate, who are the Manchester agents for Bayard cars.

ARMSTRONG-WHITWORTH

The fame of Armstrong-Whitworth is known wherever guns and battleships are familiar. And the same genius, the same brains and staff, the same workmanship, the same materials as to quality which earned the Armstrong reputation in the universal reputation are used in the Armstrong-Whitworth motor cars. Thus the reliance which nations place in the Armstrong armament can be as safely placed by the individual in the Armstrong-Whitworth car. Owing to space limitations only two models will be shown—a 20-30 h.p. cabriolet and a 20-30 h.p. touring car. Both the bodies are the product of the Armstrong-Whitworth Manchester Coachworks. The other types of this famous make to be seen at their show-room include a 30-50 h.p. six-cylinder, a 20-30 h.p., a 17-25 h.p., and a 15-20 h.p. The Manchester depot is in Deansgate.

ARROL-JOHNSTON.

There is no denying the popularity of Scotland as the ideal country for motoring. And it is no less true that "the car which made Scotland famous" is undoubtedly the Arrol-Johnston. That, however, is more or less ancient history. Coming down to modern facts, it is sufficient to say that the Arrol-Johnston works at Dumfries are among the finest motor car works in the United Kingdom to-day. And it is but repeating a truism to say that the car is worthy of the works. No matter whether it be the old stand-by, the famous "Fifteen," or the record-making "Eleven," or the six-cylinder "Ten and Three," the verdict as shown by public appreciation, is the same. A distinctive feature of this firm's policy is that they do not sell retail. Which means that every purchaser of an Arrol-Johnston car is at once



A SMART STOEWER RUNABOUT.

put in touch with a local agent, from whom all necessary supplies, spare parts, etc., can be obtained at a moment's notice. Mr. J. S. Cordingley, of Haslingden, is local agent for Arrol-Johnston cars.

CLEMENT-TALBOT.

During the past season upwards of 60 highest awards have been won by the famous Talbot car in competitions open to all makes, the scene of these competitions being located in every country. Added to this, the Talbot has made a place for itself in the category of world's records at Brooklands, accomplishing feats of speed which cars of many times the power have not dared to attempt. Only two models of this car will be on view at Manchester. One is a handsome 20-30 h.p. limousine landulette, with coachwork by Windover. It is fitted with dynamo electric lighting set and lamps, shock absorbers, five detachable wheels, full equipment of interior coach accessories speaking tube, etc. The second is a similar 12 h.p. touring car, with hood, screen, etc. Mr. Tom Garner, of Peter-street, Manchester, is the district agent for Talbot cars.

DAIMLER.

Only one example of Daimler cars will be shown at the City Hall. This is a "special Daimler limousine" similar to the one shown at Olympia, made for Her Majesty Queen Mary. The car which has been the favourite of Royalty ever since Royalty began to use motor cars is always a centre of attraction at a motor show. This particular car keeps up the reputation of the make. Other models of Daimlers, for which there was no room at the Exhibition, will be shown at the company's depot, 63, Deansgate, where trial runs may be arranged.

CADILLAC.

The only car which twice secured the Dewar Trophy, the highest recognition for excellence, is the Cadillac. This year's model possesses novel features, including a double bevel gear on the back with an electric gear change, beside the self-starting, self-lighting, and self-ignition device which earned for the Cadillac double honours among motor cars. Messrs. T. Blake and Co., of Liverpool, are agents for Cadillac cars.

STRAKER-SQUIRE.

At Stand No. 32 (Lookers) will be seen three models of the Straker-Squire, or rather one model in three styles of body. There is a four-seater boat-shaped body with detachable back seats, the spare wheel being carried inside, with disappearing hood. Another is a two-seater Den Plan landulette to seat four inside and two out. The third is a polished exhibition chassis, as shown at Olympia. Messrs. Lookers Limited, of Hardman Street, Manchester, are selling agents for Straker-Squire cars.

DUNLOP TYRES.

A majority of the cars on exhibition will be found equipped with Dunlop tyres. This is the best recommendation possible for any tyre, inasmuch as the exhibitors, being naturally anxious to make the best possible showing of their cars, see to it that they are fitted with the best tyre—the Dunlop. On Stand No. 93, however, will be found an exhibit of Dunlop specialities in all sorts of tyres, plain, grooved and leather steel-studded,

detachable wheels, detachable rims and garage rim holder, rims for artillery and wire wheels, tyre fitting stand, patent detachable rim brackets, detachable rim carrier, and Dunlop accessories of all kinds. The specialities for 1914 are the detachable twin wire wheel, the new solution flask, and the new tyre pick.

ROLLS-ROYCE.

A motor show without an example of what is claimed to be "The World's Best Car" would be a case of Hamlet without the Prince of Denmark. Messrs. Cockshott are the local agents for this famous make, a model of which is the chief item of their exhibition.

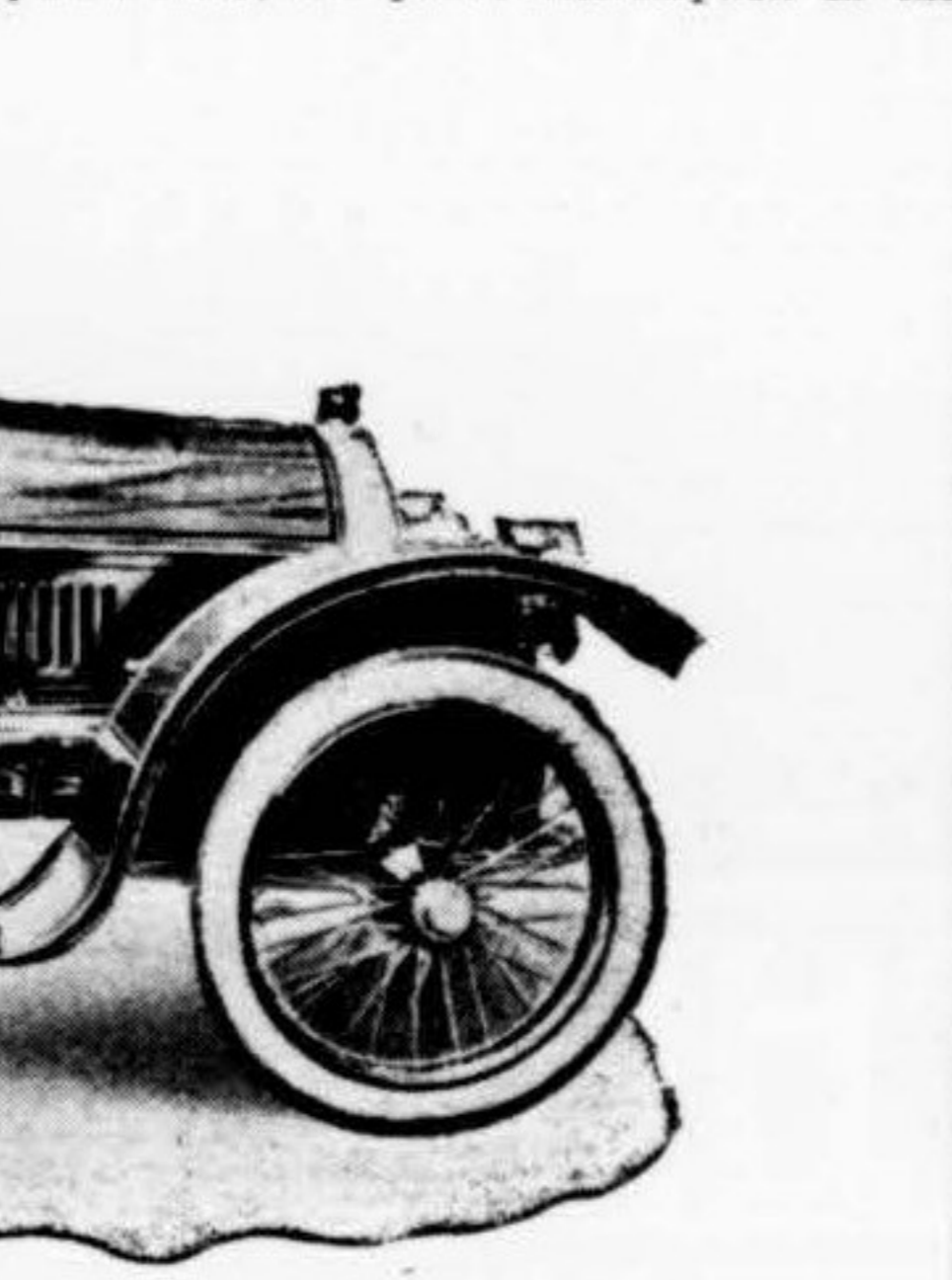
THE "N.B." CARS.

Stand 55.
The exhibit of Newton and Bennett, Ltd.,



MR. HARRY TURNER, OF LOOKERS.
On Stand 55 includes 12 h.p. "N.B." chassis, 12 h.p. "N.B." special boat-shaped torpedo phaeton, 22 h.p. self-starting S.C.A.T. cabriolet, 20-30 h.p. Nazzaro limousine.

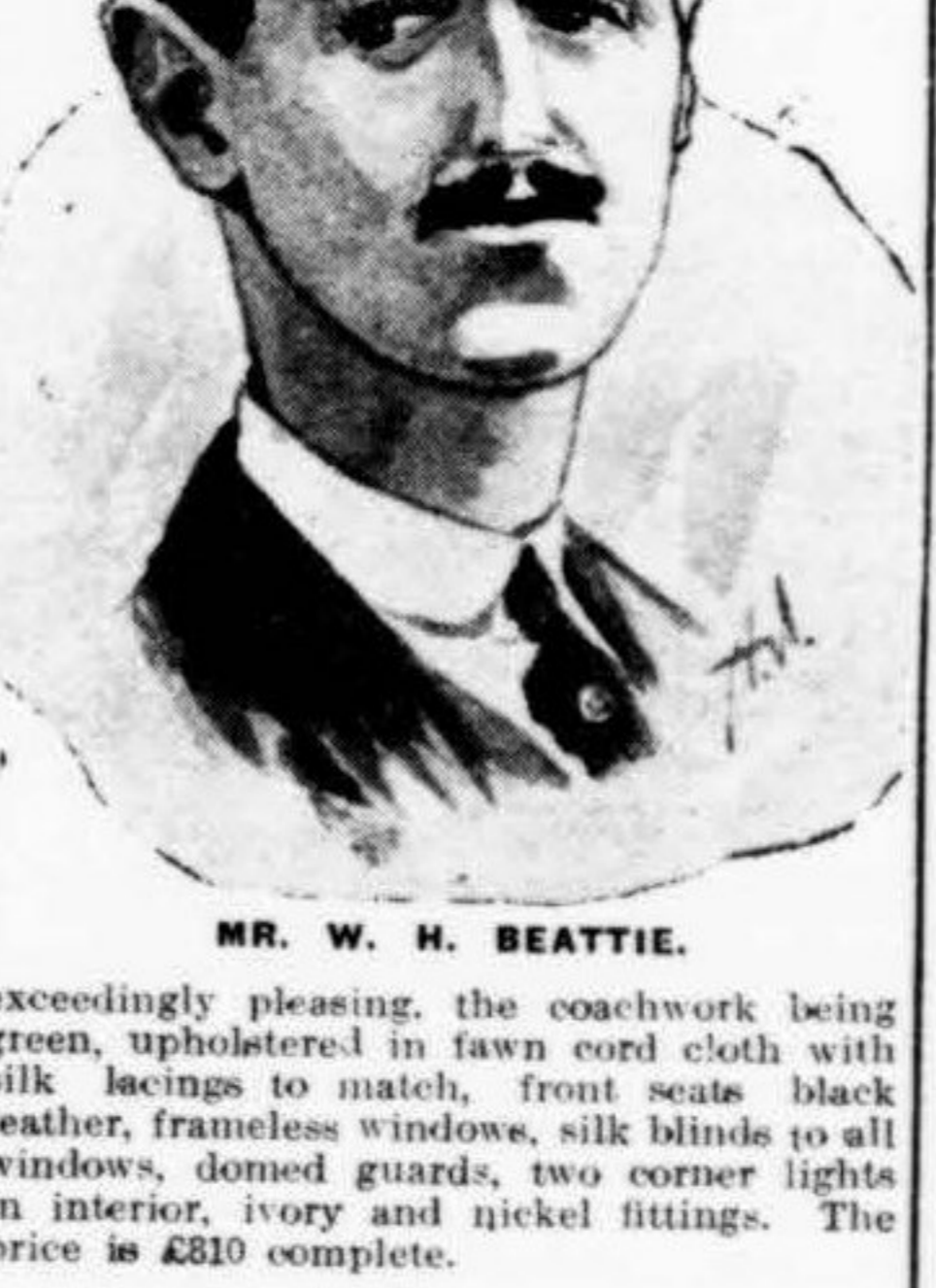
The policy adopted by the well-known Manchester firm, that is concentration on the perfection and manufacture of one type of design, is doubtless responsible for the phenomenal success of the 12 h.p. N.B. car. Introduced so short a time ago as last year, there are now a considerable number of those vehicles in the hands of owners, who speak of their cars in terms of unstinted praise. While of recent introduction, the 12 h.p. N.B. car embodies the results of many years' experience. Many ingenious and original features have been embodied. It is noteworthy that one of the first chassis to be turned out entered the reliability trials and hill climbs held respectively by the Manchester and Lancashire Clubs during the summer, and beat all cars under 20 h.p. in both trials, the petrol consumption in the



latter trial working out at 411 miles per gallon. The N.B. car, by the way, had the smallest bore engine in the trials. The price complete, including one-man hood, folding glass screen, head, side and tail lamps, horn and speedometer, five wood or steel detachable wheels, one spare Dunlop cover and tube, 819 x 50 on spare wheel, is £365.

The 22 h.p. self-starting S.C.A.T. cabriolet is light and graceful, aluminium being used throughout in the construction of the body. There are detachable wheels, and N.B. self-starter and tyre inflater. The R.A.C. ratings is 25.6 h.p. Fitted with detachable luggage grille, and internally lighted by electric lamps, with two corner lights, the model is sure to arrest attention. It is listed at £785 complete.

The 20-30 h.p. Nazzaro limousine, another model de luxe, has a similar R.A.C. rating, and is thoroughly up-to-date. The body is



exceedingly pleasing, the coachwork being green, upholstered in fawn road cloth with silk linings to match, front seats black leather, frameless windows, silk blinds to all windows, domed guards, two corner lights in interior, ivory and nickel fittings. The price is £810 complete.

C.A.V. SPECIALITIES.
The electrical and mechanical efficiency of the C.A.V. system of electric lighting for motor cars. Messrs. C. A. Vandervell and Co. are exhibiting on Stand No. 109 will appeal to all those motorists who are desirous of obtaining reliable car lighting service. New models of C.A.V. head, side and tail lamps are on view, while the C.A.V. step light for illuminating the step of the car to prevent accident when alighting should be carefully examined. The C.A.V. improved focusing mechanism for head lamps is well worth inspection, as it forms a real advance on patterns now in use. Among other lamps on the stand are dashboard lamps, steering pillar lamps, roof and corner lamps for interior lighting, and other accessories which combine luxury with utility are cigar lighters and illuminated hand mirrors. Improved models of C.A.V. variable speed dynamo are to be seen, and these are slightly more efficient than the equivalent types of last year.

There is also in evidence the C.A.V. electric starter, which consists of a high-speed motor

CAV Dynamo Car Lighting

DON'T FORGET TO PAY US A VISIT BEFORE LEAVING THE SHOW

North of England MOTOR SHOW Manchester Stand 109

Messrs' Dep., 12, Victoria Buildings, St. Mary's Gate, C. A. VANDERVELL & Co., London, W.

STAND NO. 91.
Challiner's Patent Detachable and Contractable Rims.
By the aid of this extremely simple CONTRACTABLE DETACHABLE DEVICE, you can now fit a tyre on the rim, and the rim on the wheel, in under five minutes. Sounds good—doesn't it? If you pride yourself on keeping your car up-to-date, why not inspect it for yourself at our STAND at the MANCHESTER SHOW. Having done so, your name will be next on the long list of Users.

The Shrewsbury & Challiner Tyre Co. Limited,
ARDWICK GREEN, MANCHESTER. Tel. No. 962 Central.
TYRES AND WHEELS FOR ALL PURPOSES.

MORRIS - OXFORDS.
STAND 42.
Secure one and you will get THE BEST.

SOLE AGENT:
H. W. CRANHAM, 221, Deansgate,
MANCHESTER.

LOBERS LIMITED
beg to announce that they have taken up the Agency of three or four makes of Cars, and can undertake the efficient Repairs of all makes of Motor Vehicles, including Cycles, Cars, Vans, and Luries. Abundant room in their commodious premises for Garaging and maintaining Cars or Wagons is at the disposal of would-be purchasers. Private Motor Houses and Drivers provided on application. For full particulars and terms, apply:—

LOBERS LIMITED,
Cannon Street, Accrington.
Tel. 570 (Two Lines).

Blackburn West End Garage, Limited.
Telephone 932. Telephone 932.
ACCOMMODATION FOR 60 CARS.

AGENTS FOR THE FOLLOWING FIRST-GRADE CARS:—

STAR	10.12 h.p. Completely Equipped,	290 Gns.
	12.15 h.p. Completely Equipped, including Dynamo lighting set,	340 Gns.
	15-9 h.p. Completely Equipped, including Dynamo lighting set,	385 Gns.
	20.1 h.p. Completely Equipped, including Dynamo lighting set,	460 Gns.
ROVER	12 h.p. with Complete Equipment, including Ratax Leitner Dynamo lighting set. 2-Seater	£331
	4-Seater	£350
EMPIRE	"The Aristocrat of American Cars." 20-25 h.p. 5-Seater, Ready for the Road.....	200 Gns.
HILLMAN	The Smartest 2-Seater on the Road. 9 h.p., 4 Cylinder, 60x120, 3 Speeds and Reverse, 5 Sankey Wheels and Dunlop Grooved Tyres. Fully Equipped. A car any lady can drive.	£200
	With Limousine Body	£235

Any Make of Car Supplied.

SOLE AGENTS FOR
SUNBEAM Motor Cycles,
2 1/2 H.P., 3 1/2 H.P., and 6 H.P.
THE CYCLE THAT HAS WON EVERY COMPETITION IN WHICH IT HAS ENTERED.

GARAGE, SHOW ROOMS, and REPAIR WORKS,
Crosshill, Preston New Rd.,
BLACKBURN.