

North of England Motor Exhibition.

[CONTINUED.]

fed by a battery, and operating a friction pulley placed to come into contact with the engine fly-wheel on depressing a pedal. C.A.V. Rutherford magnets are displayed in models suitable for motor cars of any horse-power, and the ingenious automatic coupling shown should prove exceptionally interesting on account of its simplicity.

RUDGE-WHITWORTH WHEELS.

The Rudge-Whitworth detachable wire wheel, by laboratory tests as well as by prolonged road experience, including much racing, has been recognised as amongst the strongest parts of the car. The new lock nut is a single robust ring with a screw thread inside it, and toothed groove on the part that touches the end of the detachable wheel, and four holes in its periphery to engage the simple C spanner with which it is operated, and that is all there is to it. It has no annoying springs, ratchets, pawls, or locking bolts, but what it has got is the invention which by virtue of the contacts with the only two things which the lock nut can touch, viz., the inner hub and the detachable wheel causes the lock nut to tighten itself and keep itself tight.

To make the actual fitting of a tyre to the rim of the wheel easier, Rudge-Whitworth, Ltd., have now decided to market wheels with the "Eureka" detachable flange, which

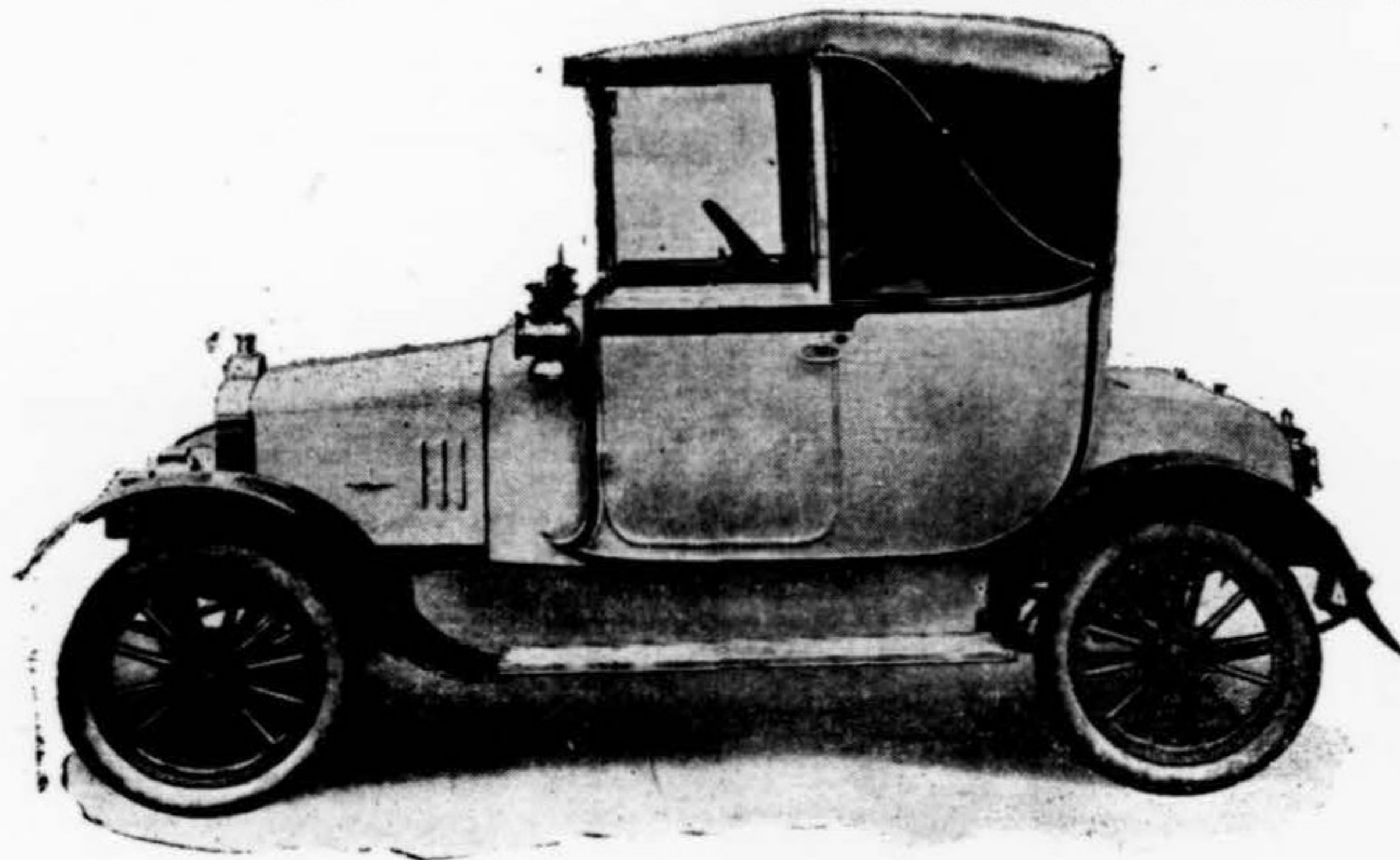


Mr. ELLIS CHADDERTON, of Carlisle & Co.

cool and Bolton, agent for the Talbot, Arrol-Johnston, Baguley, Humber, Studebaker, Delage, and Siddeley-Deasy cars, will be pleased to furnish information to visitors to the City Hall. Many of the cars for which he is agent have already been noticed in these pages.

There are a few examples of the Baguley car in the Accrington district. Manufacturing only one size of car, and concentrating the entire works upon that model, the makers are able to offer a chassis of great merit. The Baguley cars are manufactured throughout at the works at Burton-on-Trent, on the most highly specialised modern methods of construction, and the works are fully equipped with the latest machinery. The design is the result of experience obtained on the road and in the manufacture of motor cars since their inception in this country. Each chassis is tested for hill climbing and for smooth and steady running, and it is not passed off test until it complies with the rigid standard every Baguley chassis is expected to attain on all points. The 15-20 chassis is listed at £270, and the Baguley touring car at £450.

The Studebaker works are among the most extensive in the States; it is claimed that the factories make up the largest and most completely equipped automobile manufacturing plant in the world. In the thirteen Studebaker plants at Detroit every part used in Studebaker automobiles is made. The floor space of the factories covers forty acres. To



STANDARD LIGHT CAR, WITH "RANELAGH" COUPE BODY, AS SHOWN ON STAND 35.

is made by the Electric and Ordnance Accessories Co., Ltd. They have adopted this device because it adds only a few pounds to the weight of the wheel, and is the most refined simplicity, there being only one loose part, viz., the detachable flange itself. This flange cannot get out by any possibility, because the two ends engage pegs in the groove in which they fit, which prevent the ends from separating until they are lifted out of the groove, and so long as there is a valve in the tyre, whether it is inflated or not, that valve holds the two ends of the flange down on the groove.

materials, high and low tension wire, electric light flex horn bulbs, insulating tape, and their noted tyre doctor, which fills cuts in the tread of the tyre with ease and simplicity. This preparation acts very considerably as a waterproofing agent, and stops moisture from attacking the fabric in the tyre. Kemp's have something quite new in radiator caps which can be had in any colour to suit the car, and insulated from heat by an ebonite covering which will also save the use and labour of metal polish. Kemp's, by the by, are sole agents in the North for the Pirelli tyres, which during 1913 were used by the winners in every important motor race on the Continent. As an inducement for motorists to fit their wheels with these tyres, Pirelli offer free of charge a policy of insurance which will cover all third party and other risks.

operate these factories it requires a force of 12,000 men. The Studebaker laboratories for the testing and analysis of metal are among the most completely equipped in the manufacturing business. 50,000 Studebaker cars were made in 1913. The Studebaker Corporation make quite a number of models, but lay special store in three cars—the "25" touring car for five passengers, the "35," which is electrically lighted and electrically started, and the "six," also electrically equipped.

LOBERS, LIMITED.

Lobers, Ltd., Cannon-street, Accrington, have struck out in an entirely new direction. Satisfied that many would be purchasers of cars are deterred through lack of accommodation, or because they have not sufficient work for the engagement of a regular driver, they have provided private quarters for the housing of cars, etc., and undertake to maintain in perfect order, ready at a moment's notice, any make of car, and to have a com-

FREE GIFTS TO MOTORISTS

An interesting stand at the City Hall is No. 100, in the gallery, where Kemp's Vulcanizing Co., Ltd., of 19, Hardman-st., Manchester, exhibit specimens of their tyre and tube repairs and retreads. In addition Kemp's are showing other specialities, such as repair outfits, tyre repair and vulcanizing

TOM GARNER.

Mr. Tom Garner, the motor factor (12, Peter-street, Manchester), with branches at Liver-

NORTH OF ENGLAND
MOTOR SHOW
CITY HALL
PLEASURE CARS COMMERCIAL VEHICLES
JANUARY 9th-17th JANUARY 30th-FEB 7th
MANCHESTER

NORTH OF ENGLAND PLEASURE MOTOR SHOW,
CITY HALL, MANCHESTER. January 9th to 17th.
OPEN DAILY - 10 till 10.
ADMISSION ONE SHILLING.
COLLECTION OF WORLD'S FINEST AUTOMOBILES FOR ALL PURSES.
Self Starters, Electric Lighting, Improved Engine Design, Novelties in Tyres, Wheels, and Accessories.
COMMERCIAL MOTOR SHOW, CITY HALL,
January 30th. February 7th.

Manchester Motor Show
JAN. 9-17th, 1914.
Atkinson & Milnes Garages Ltd.
KING STREET, ACCRINGTON. Tel. No. 27. MANCHESTER ROAD, MASHINGDEN. Tel. No. 74.
ARE AT YOUR SERVICE
In giving you absolutely unbiased advice upon the purchase of any type of motor for any particular purpose, and can give you any trial in order to convince you upon any point which you may be in doubt of. Details of running costs can be furnished for any make or type of car, and if required arrangements can be made whereby you can have a car supplied and maintained for you at a fixed sum per annum.
Arrangements can also be made for any type of car to be supplied on the Gradual Payment system, so that it will be possible to purchase a car without disturbing your investments.
Make arrangements to meet one of our representatives at the Show. A postcard now is all that is necessary.

Vauxhall
The Car Superexcellent
—and no one knows this better than do North-country motorists.
SEE THE MODELS EXHIBITED ON STANDS 26, 2 and 4, Also in the Special Showrooms: 13 AND 15, ST. ANN'S SQUARE.
SEVENTY-SEVEN first prizes and special awards have been won in competitions during 1913 by Vauxhall Cars—a tribute to their merit of the most emphatic nature.
CHASSIS } 16-20 h.p., £375. With C.A.V. Lighting Set, £390.
PRICES: } 25 h.p., £480. With C.A.V. Lighting Set, £500.
Also with Electric } 35 h.p. (6-cyl.), including C.A.V. Lighting Set, £650.
Lighting Sets: } 25 h.p., P.H., £515. With C.A.V. Lighting Set, £535.
EVERY VAUXHALL CHASSIS IS GUARANTEED FOR THREE YEARS.
DISTRICT AGENTS:
MANCHESTER AUTOCARS, LTD., 57, WHITWORTH-ST., MANCHESTER.
R. WILKIE & CO., ALBION STREET, LEEDS.
W. WATSON AND CO., RENSHAW STREET, LIVERPOOL.

THE MANCHESTER AUTOCARS LTD.,
District Agents for the **Vauxhall** The Car Superexcellent.
New Show Rooms:—13 and 15, ST. ANN'S SQUARE, MANCHESTER.

The Car of the Year.
— THE —
ROVER "12"
Complete with 12 Volt. Ratax Lighting Set, One Man Hood, Horn, Spare Wheel and Tyre, all Wheels Detachable.
£350
The Northern Supply Co., DEANSGATE, MANCHESTER. The Rover Co., Limited, METEOR WORKS COVENTRY.

NORTH OF ENGLAND MOTOR SHOW
City Hall, Manchester, January 9th to 17th, 1914.
DUNLOP EXHIBITS.
DUNLOP MOTOR TYRES, plain, grooved, leather-steel-studded.
DUNLOP DETACHABLE TWIN WIRE WHEELS which attracted such attention at Olympia. First time exhibited at a Provincial Show.
DUNLOP SINGLE DETACHABLE WIRE WHEELS. Dunlop detachable wire wheels are interchangeable with the R.A.F. wheels of France.
DUNLOP DETACHABLE RIMS, and garage rim holder.
DUNLOP MOTOR RIMS for artillery and wire wheels.
FULL RANGE OF DUNLOP ACCESSORIES, including:—tyre fitting stand; patent detachable rim brackets; detachable spare rim carrier; tyre manipulator; fitter's stop; repair outfits; tyre gaiters; bolt protectors; bolt valve plates; security bolts; sure-patches; solution; rim paint; tread dressing; waterproof bags for spare rims, tyres, and wheels; new solution flask; new tyre pick.
THE DUNLOP RUBBER COMPANY, LTD.,
FOUNDERS OF THE PNEUMATIC TYRE INDUSTRY.
196, DEANSGATE, MANCHESTER.

Daimler
Public Opinion.
CONSENSUS of public opinion points very clearly to the new Daimler "20" as being most distinctly the car of the year for 1914. Original in its design, it embodies strength with lightness, and power with silence to a degree that surpasses any previous attainments in a car of this class. In fine, it is the unsurpassable machine, and ideally suited to the requirements of those who want an open touring car or a landaulette.
Daimler Cars 1914.
Four Speeds. Electric Light. Electric Starter.
Twenty. Thirty. Special.
Four Cylinders. Four or Six Cylinders. H.M. The Queen's New Car.
The Daimler Company, Ltd.,
COVENTRY
MANCHESTER SHOWROOMS, 60, DEANSGATE.

Luxurious Coachwork.

STAND 53.
William Arnold,
SOLE AGENT FOR
BERLIET AUTOCARS
WORKS:
UPPER BROOK STREET, MANCHESTER.
Telegrams: "Luxurious, Manchester." Telephone: 6584 City.

THOMPSON BROS.,
(BLACKBURN) Ltd.,
SOLE AGENTS FOR **BELSIZE**
BLACKBURN AND DISTRICT.
Prices, £215 to £575.
The car for the man of moderate means. Economical, Reliable, Silent, and Good Value.
TALBOT
Be sure to see the new 12 H.P. complete Car, four speeds, dual ignition, five wheels, tyres, one-man hood, screen, five lamps, etc, dynamo lighting outfit, £410.
Armstrong-Whitworth
(BLACKBURN AND 10 MILES RADIUS).
Prices, £475 to £1,200.
The ideal Carriage-de-Luxe, combined with highest quality workmanship and materials, this car is now one of the best in the world. Be sure to see the new 20/30 h.p. model with latest Cabriolet body.
We shall be in attendance at the Show on each of the above stands, and will there quote you lowest inclusive prices for these or any other make.
SHOWROOMS, GARAGE, & REPAIR WORKS,
15, Preston New Road, Blackburn.
TELEPHONE 1050

Argyll Cars, No. 62.
A Trial on the Famous Single Sleeve Valve Car will be a revelation.
The local agent, J. S. HORSFALL, of Nelson, will be in attendance on this Stand, when all enquiries will receive prompt attention.
Trial Runs Arranged in your Own District.
Apply—HORSFALL, Nelson.

"BEAR IN MIND"
We specialise in Tyre and Tube Repairs, Re-Treading, etc.
KEMP'S Vulcanizing Co., Ltd. STAND 100
Tel. No. 4833 City. 15, HARDMAN STREET, MANCHESTER. GALLERY